

# ORGANIGRAMA

## DIRECTIEI GENERALE DE ASISTENTA SOCIALA SI PROTECTIA COPILULUI

Anexa nr. 1  
la Hotărârea Consiliului Județean Giurgiu  
nr. 144 din data de 05.05.2011

CONSILIUL JUDEȚEAN GIURGIU

PRESEDINTE

850,28,822

DIRECTIA GENERALĂ DE ASISTENȚĂ SOCIALĂ ȘI PROTECTIA COPILULUI

COMUNA DE EVALUARE A PERSOANELOR CU HANDICAP ABUZE

COLEGIUL DIRECTOR

DIRECTOR EXECUTIV

764,21,743

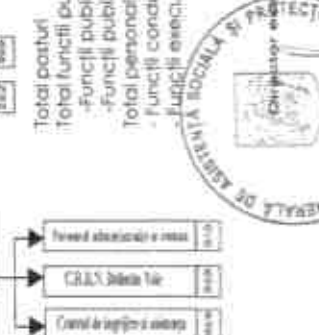
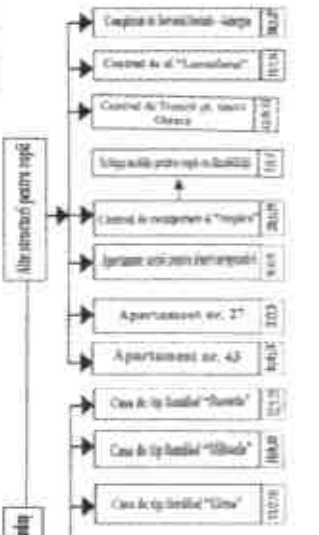
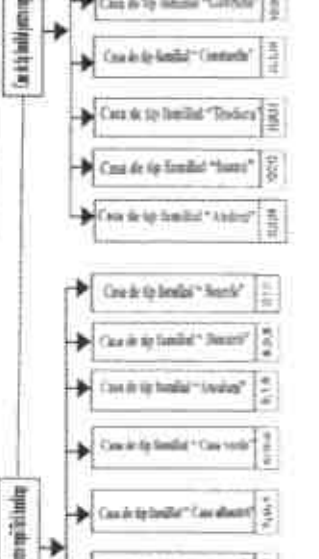
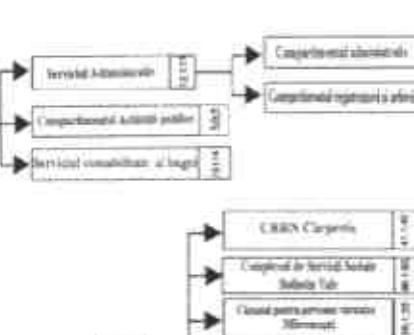
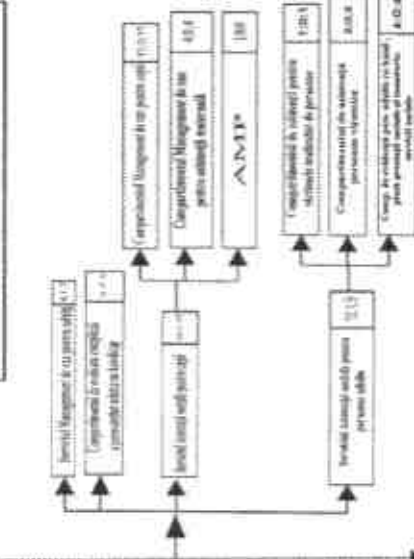
DIRECTIA PENTRU PROTECTIA IMBETRIATILOR COPILILOR SI A PERSOANELOR ABUZE

DIRECTOR EXECUTIV ADJUNCT

333,30

DIRECTIA ECONOMICA

DIRECTOR EXECUTIV ADJUNCT ECONOMIC



Total posturi: 850  
Total functii publice: 69  
- Functii publice de conducere: 8  
- Functii publice de executie: 61  
Total personal contractual: 781  
- Functii conducere: 20  
- Functii executie: 761

