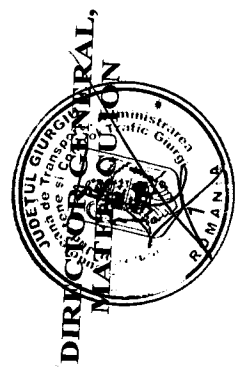
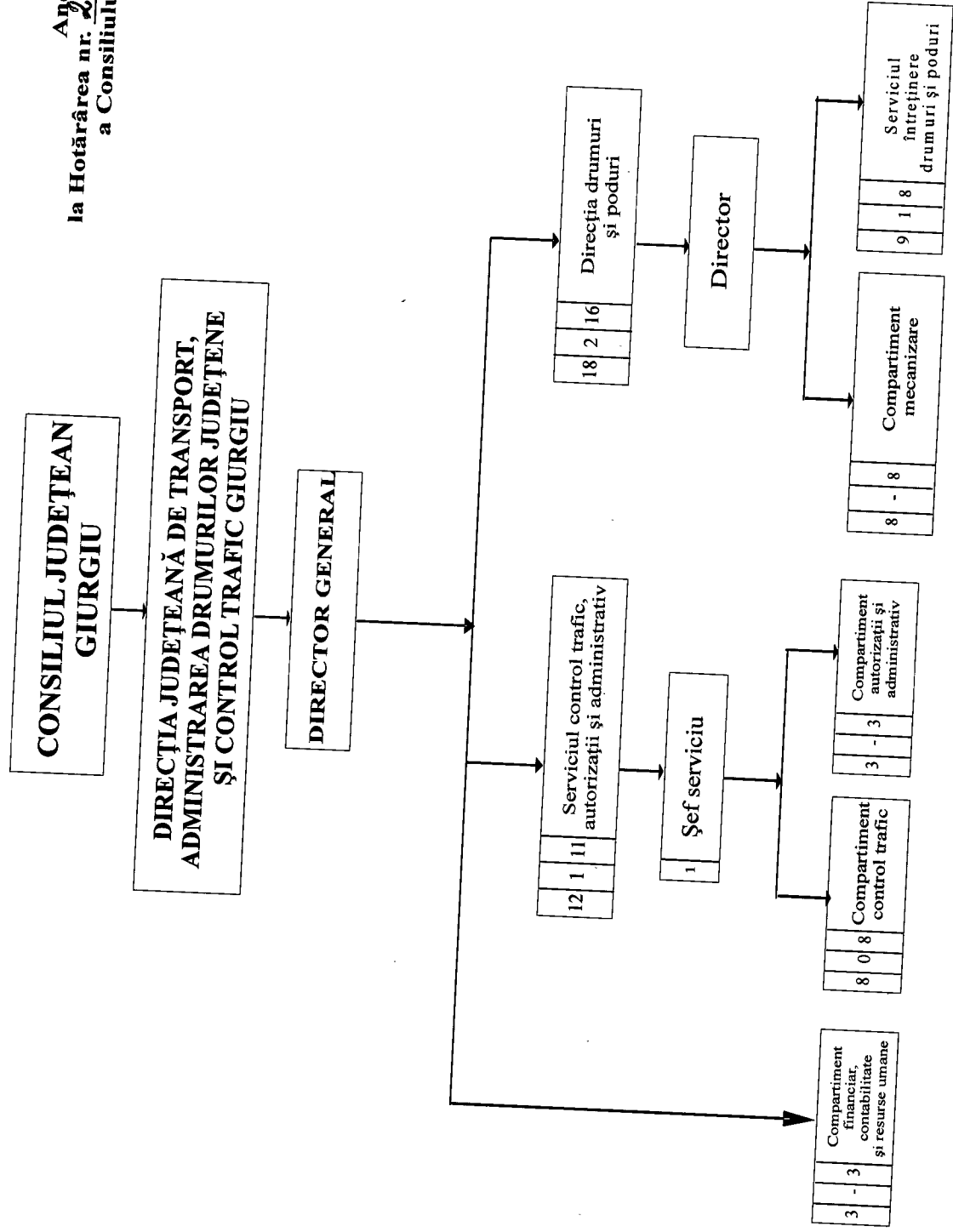


Total posturi: 34, din care:
 4 de conducere
 30 de execuție

Anexa nr. 1
 la Hotărârea nr. 20 din 4.03.2014
 a Consiliului Județean Giurgiu



STAT FUNCTII 2013

NR.	FUNCTIA		STUDII	GRAD TREAPTA	NR POSTURI
	DE CONDUCERE	DE EXECUTIE			
0	1	2	3	4	5
	DIRECTOR GENERAL		S	II	1
SERVICIUL CONTROL TRAFIC, AUTORIZATII SI ADMINISTRATIV (12)					
	SEF SERVICIU		S	II	1
COMPARTIMENT CONTROL TRAFIC (8)					
		INSP SPEC	S	IA	2
		INSP SPEC	S	I	1
		INSP SPEC	S	II	1
		REFERENT	M	IA	2
		REFERENT	M	I	1
		MUNC. CALIF	M	I	1
COMPARTIMENT AUTORIZATII SI ADMINISTRATIV (3)					
		INSP SPEC	S	IA	1
		INSP SPEC	S	II	1
		MUNC. CALIF	M	IV	1
DIRECTIA DE DRUMURI SI PODURI (18)					
	DIRECTOR		S	II	1
COMPARTIMENT MECANIZARE (8)					
		REFERENT	M	IA	1
		SOFER	M		3
		MUNC. CALIF	M	I	4
SERVICIUL INTRETINERE DRUMURI SI PODURI (9)					
	SEF SERVICIU		S	II	1
		INSP SPEC	S	IA	1
		REFERENT	M	IA	1
		SOFER	M		3
		MUNC. CALIF	M	I	3
COMPARTIMENT FINANCIAR CONTABILITATE SI RESURSE UMANE (3)					
		CONSILIER	S	IA	1
		INSP. SPEC	S	I	1
		REF DE SPEC.	SSD	IA	1

TOTAL POSTURI 34
 din care:
 conducere 4
 executie 30



Intocmit,
 Budrinca Gina